

PREPARATIONS

PREPARATIFS

PREPARTIVOS

BASIC OPERATIONS

OPERATIONS DE BASE

OPERACIONES BASICAS

E

Names and functions of parts	10
Viewfinder display/LCD panel	14
Using the strap/Soft case (optional)	16
Outline of operations	18
Loading the battery	24
Checking the battery	26
Points to remember	28

Loading the film	32
Taking pictures	38
After Shooting	46
Unloading the film	48



Thank you for purchasing an Olympus camera. Before you start to use your new camera, please read these instructions carefully to obtain optimum performance and a longer service life from the unit.

WARNING



Ignoring this mark may result in the death or serious injury of the user.

KEEP THE BATTERIES AWAY FROM FIRE. NEVER TRY TO DISASSEMBLE, RECHARGE, OR SHORT CIRCUIT BATTERIES.

NEVER ATTEMPT TO DISASSEMBLE THE CAMERA; IT CONTAINS A HIGH-VOLTAGE CIRCUIT. IF THE INTERNAL PARTS OF THE CAMERA ARE EXPOSED DUE TO DROPPING OR DAMAGE, REMOVE THE BATTERIES IMMEDIATELY TO PREVENT FURTHER USAGE. IN CASE OF MALFUNCTION, CONSULT YOUR NEAREST OLYMPUS DEALER OR OLYMPUS SERVICE CENTER.



- Before using your camera, read this manual carefully to ensure correct use.
- We recommend that you take test shots to get accustomed to your camera before taking important photographs.

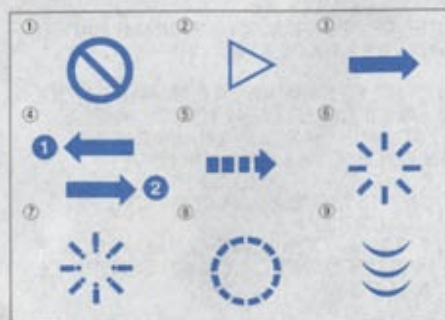
MAIN FEATURES

- A bright 35mm, F2.8 lens is built-in.
- Weatherproof. ■ Remote control (optional).
- Versatile, easy-to-use functions include spot metering, night scene, as well as various flash modes.
- The flash fires automatically to prevent fluorescent lights affecting the colors.

Symbols used in this manual:

- | | | |
|--------------------|-----------------------|----------------------|
| ① Incorrect | ④ Operation order | ⑦ Indicator blinking |
| ② Next operation | ⑤ Automatic operation | ⑧ Attention |
| ③ Manual operation | ⑥ Indicator on | ⑨ Depress halfway |

Product shown in pictures and illustrations may be slightly different from the unit.



ADVANCED TECHNIQUES

TECHNIQUES AVANCEES

TECNIS AVANZADAS

CAMERA MAINTENANCE

ENTRETIEN DE L'APPAREIL

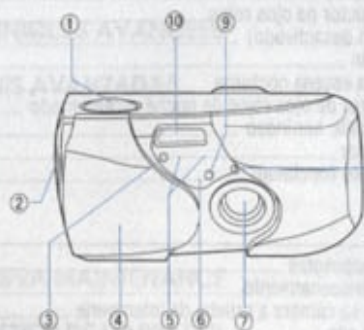
MANTENIMIENTO DE LA CAMERA

8

E

Using the flash modes	50
Auto Flash	54
Redeye-Reducing Flash	56
OFF (Flash Override)	58
Fill-in Flash	60
Night Scene Flash	62
Redeye-Reducing Night Scene Flash Mode	64
Spot	66
Selftimer	70
Remote Control (optional)	72

Questions and answers	76
Care and storage	78
Caring for your weatherproof camera	84
Battery handling	88
Remote control (optional) handling	92
Troubleshooting	94
Specifications	108



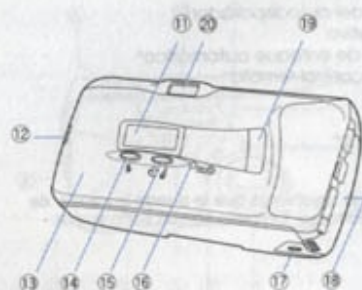
10

E

NAMES AND FUNCTIONS OF PARTS

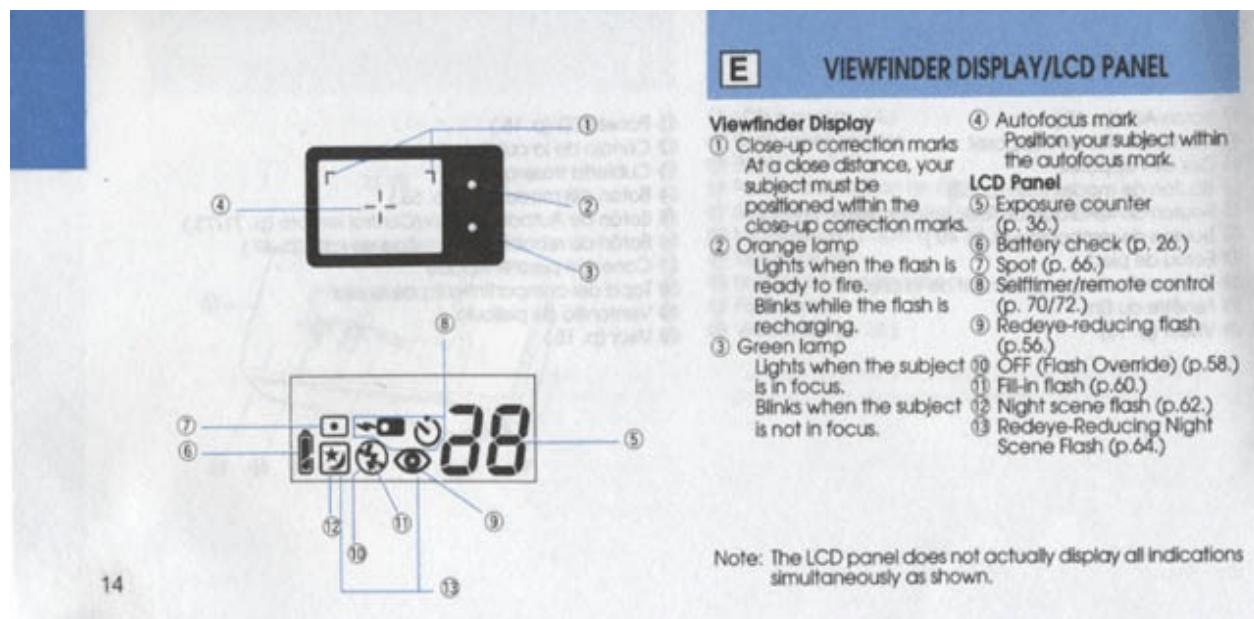
- 1 Shutter release button (p. 30.)
- 2 Strap eyelet
- 3 Selftimer indicator
- 4 Lens barrier
- 5 Autofocus windows*
- 6 Remote control sensor
- 7 Lens*
- 8 Viewfinder
- 9 Light sensor*
- 10 Flash*

* Do not soil as this can cause blurred pictures.
Wipe clean with a soft cloth.

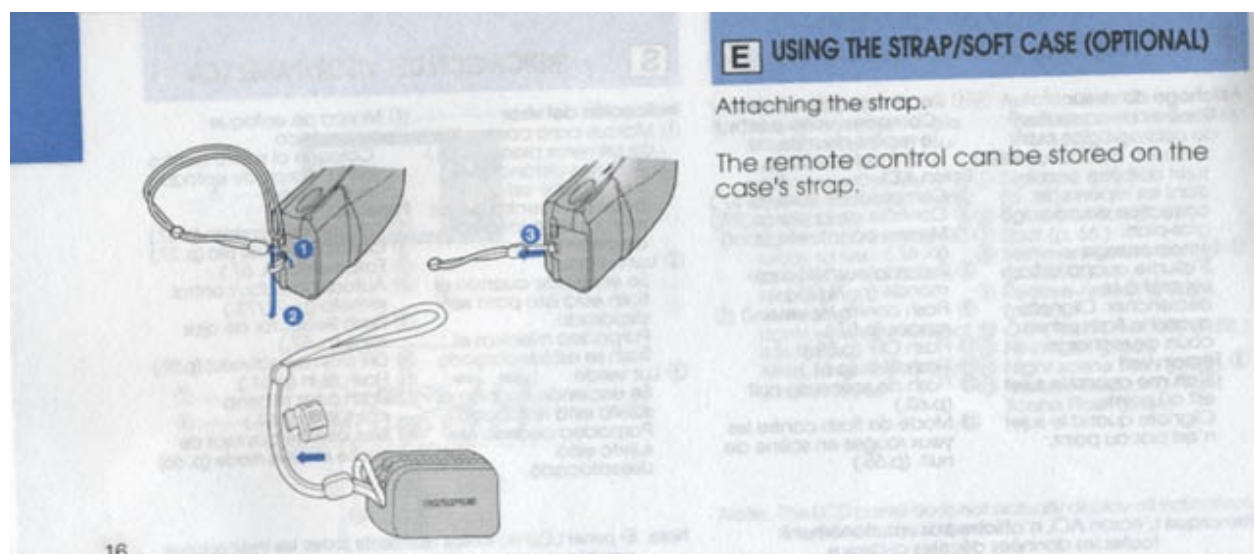


12

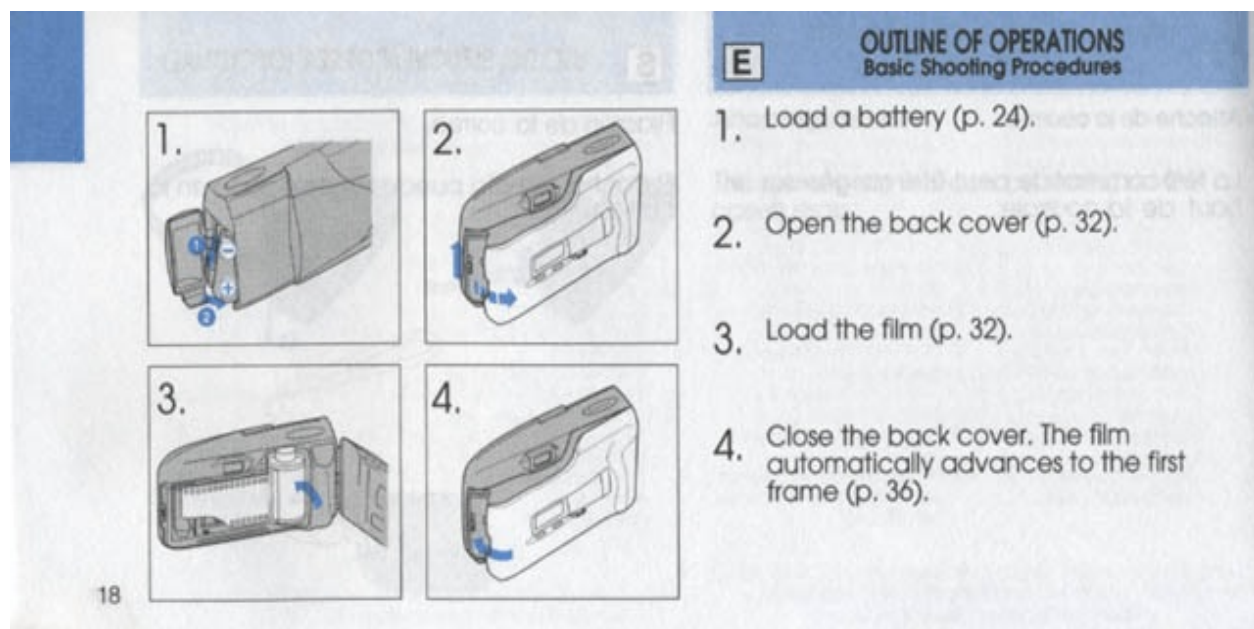
- 11 LCD panel (p. 14.)
- 12 Back cover release
- 13 Back cover
- 14 Flash mode button (p. 52.)
- 15 Selftimer/remote control button (p. 70/72.)
- 16 Mid-roll rewind button (p. 48.)
- 17 Tripod socket
- 18 Battery compartment cover
- 19 Film window
- 20 Viewfinder (p. 14.)



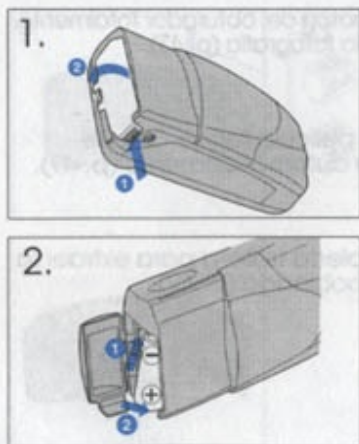
14



16

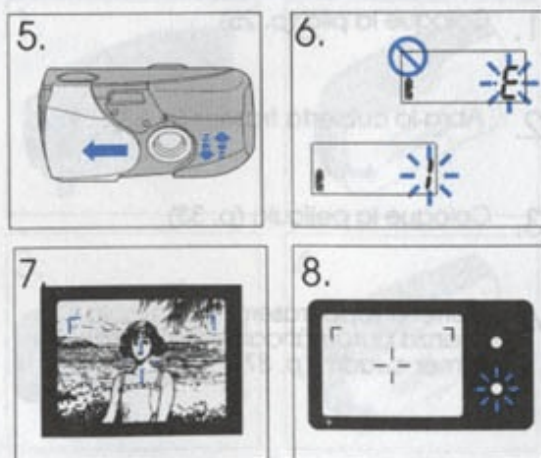


18

**E****LOADING THE BATTERY**

1. Close the lens barrier. Push OPEN ① to open the battery compartment cover ②.
2. Insert the new battery correctly as shown and close the battery compartment cover tightly.
 - Use a 3 V lithium battery (DL 123A, CR123A, or equivalent.)
 - About 20 rolls of film can be used with one new battery. (p. 76)




Read "Battery Handling" on page 88.



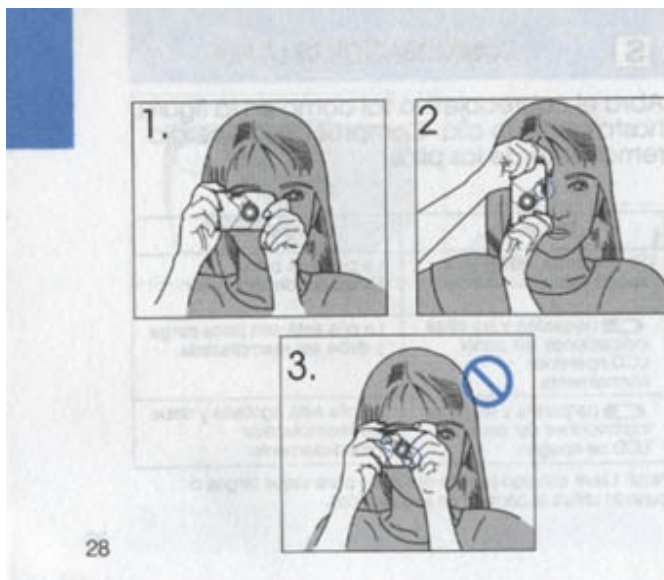
5. Open the lens barrier until you feel a click (p.36)
6. Make sure the exposure counter on the LCD panel reads 1 (p. 36).
7. Place the autofocus mark on the subject you want to photograph (p. 40).
8. Depress the shutter release button halfway to make sure the green lamp lights (p. 40).

**E****CHECKING THE BATTERY**

Open the lens barrier as shown until you feel a click. Check the remaining battery power.

Display	Meaning
 lights (and turns off automatically).	Battery is OK. You can shoot.
 blinks and other indicators on the LCD panel are displayed normally.	Battery power is low and battery should be replaced.
 blinks and other indicators on the LCD panel go out.	Battery is dead and should be replaced immediately.

Note: Keep spare batteries on hand when going on a long trip or a wedding or when using the camera in cold weather.



28

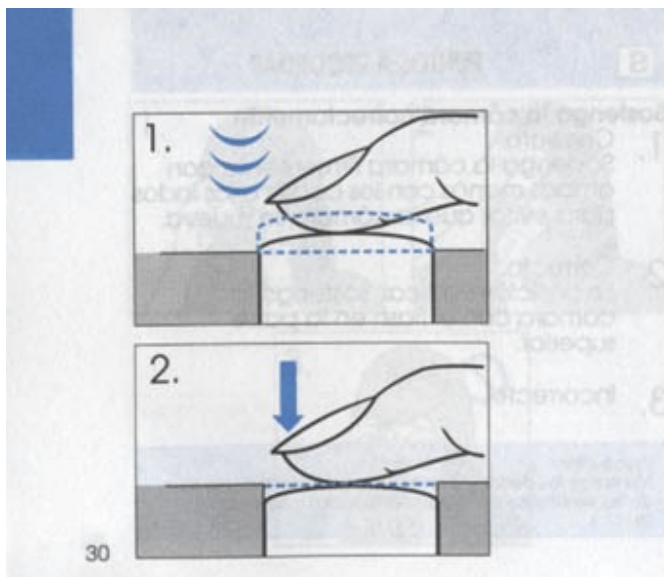
E

POINTS TO REMEMBER

Hold the Camera Correctly.

1. Correct.
Hold the camera firmly with both hands while keeping elbows at sides to prevent the camera from shaking.
2. Correct.
In the vertical position, hold the camera with its flash positioned at the top.
3. Incorrect.

Caution:
Keep your fingers and the strap away from the lens, autofocus windows and flash. (p.10)



30

Proper Shutter Release.

Practice before loading the film.

1. Depress the shutter release button halfway to lock the focus.

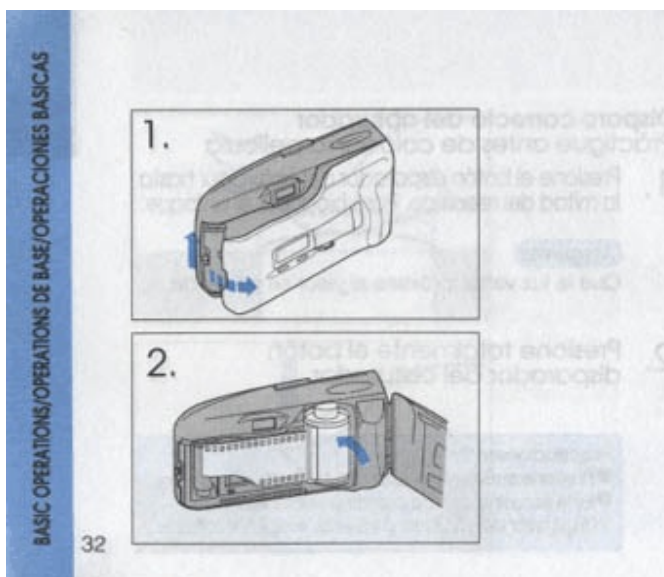
Make sure

The green lamp next to the viewfinder lights.

2. Depress the shutter release button fully to release the shutter and take the picture.

Cautions:

- Press the center of the shutter release button gently.
- Avoid shaking the camera when pressing the shutter release button to prevent blurry pictures.



32

E

LOADING THE FILM

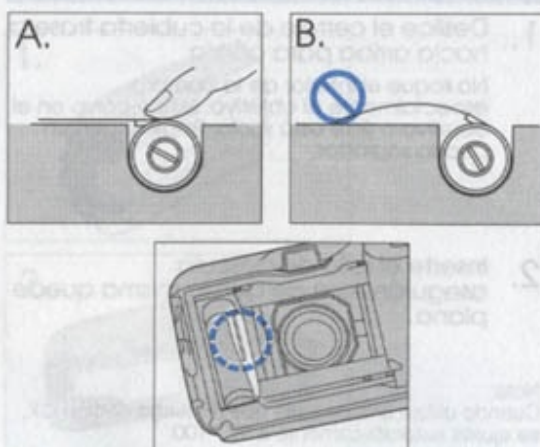
1. Slide the back cover release upward to open the back cover.

Do not touch the inside of the camera, especially the lens. If there is dust or dirt on the lens, remove it with a blower brush.

2. Insert the film cartridge, making sure the film is lying flat.

Note:

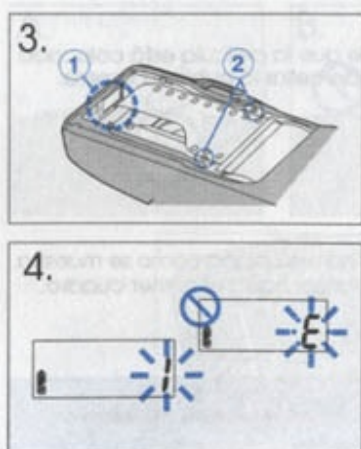
When using non-DX-coded film, ISO 100 is automatically set.



34

- A. Correct.
Make sure the film is lying flat before closing the back cover.
- B. Incorrect.
If the film is not lying flat as shown, the film may not advance to the first frame.

Caution:
Do not touch the plastic parts near the take-up spool.



36

3. Align the film leader with the mark ①, and close the back cover.
The film automatically advances to the first frame.

Make sure

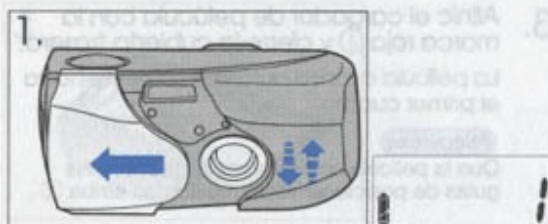
The film does not overlap any of the positioning guides ② shown on the left.

4. Open the lens barrier until you feel a click.

Make sure

The exposure counter on the LCD panel reads 1.

Note:
If E blinks in the exposure counter, as shown on the left, the film is improperly loaded. Reload the film.



38

E

TAKING PICTURES

1. Open the lens barrier until you feel a click.

Make sure

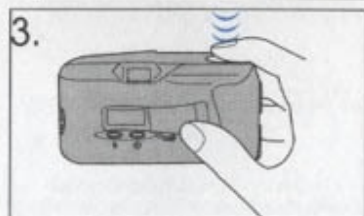
The LCD panel is on.
Lens will be set.



2. Position the autofocus mark on your subject.

① Autofocus mark

⚠ Do not look directly at the sun through the viewfinder.

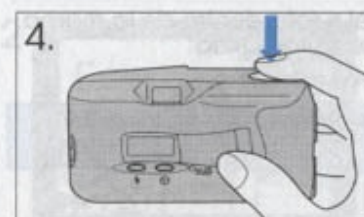


3. Depress the shutter release button halfway to adjust the focus.

Make sure

Focus has been correctly adjusted and the green lamp lights. Exposure also will be adjusted automatically.

40

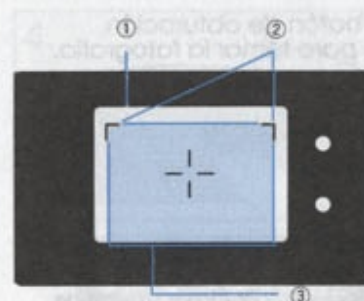


4. Depress the shutter release button fully to take the picture.
The film automatically advances to the next frame.



5. This camera has a built-in multi-beam autofocus system. With this system, the camera automatically sets the focus on a subject even in compositions where the subject may not be in the center of the frame.

42



Working Distance

The focus range of the camera is 0.35 m/1.1 ft to ∞ (infinity).

- When the subject is closer than 0.35 m/1.1 ft, the shutter will not release. (The green lamp blinks.)
- When the subject is extremely close to the camera, the subject will be out of focus although the shutter releases.

Close-up Correction

- ① Picture frame
- ② Close-up correction marks
- ③ Image area of picture at 0.35 m/1.1 ft

The viewfinder's picture frame shows the area that can be shot for subjects at ∞. However, the picture area will move lower in the viewfinder as you get closer to the subject. At 0.35 m/1.1 ft, the shaded area is the actual available image area. In this case, the subject should be positioned below the close-up correction marks.

44

ADVANCE TECHNIQUES/TECHNIQUES AVANZADAS

46

E

AFTER SHOOTING

1. Close the lens barrier.
The display goes out.

ADVANCE TECHNIQUES/TECHNIQUES AVANZADAS

48

E

UNLOADING THE FILM

The camera automatically rewinds the film when you reach the end of a roll. After the motor stops and **E** starts blinking on the LCD panel, open the back cover and remove the film.

Notes:

- The number of exposures remaining decreases during winding.
- The final number of exposures may sometimes exceed the number of exposures specified on the film.

Rewinding the film before the end of the roll

Press the mid-roll rewind button gently with a pointed object such as a ball-point pen. Do not use an object with a sharp tip.

ADVANCE TECHNIQUES/TECHNIQUES AVANZADAS

50

E

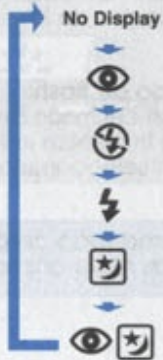
USING THE FLASH MODES

This camera has six flash modes. Select the flash mode according to your shooting conditions and needs.

How to select the flash mode:

As you press the FLASH mode button, the mode switches as shown on p. 52. The selected flash mode is displayed on the LCD panel.

- ⓘ Do not discharge flash too close to eyes of people or animals.



Auto Flash mode:
Automatically fires in low-light, back lighting and under fluorescent lighting. (p.54)

Redeye-Reducing Flash mode:
Significantly reduces the phenomenon of "red-eye" (when a subject's eyes appear red in flash photos). (p. 56)

OFF (Flash Override) mode:
The flash does not fire. (p. 58)

Fill-In Flash mode:
Fires regardless of available light. (p. 60)

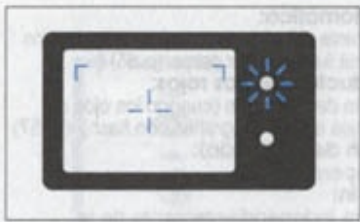
Night Scene Flash mode:
Lights the subject in the foreground with a night scene in the background. (p. 62)

Redeye-Reducing Night Scene Flash mode:
Significantly reduces the "red-eye" phenomenon against a night back ground. (p. 64)

Notes

- When firing flash, the flash strength is automatically controlled to prevent pictures from being overexposed even when the subjects are close.

52



ISO	W (35 mm)☆
100	0.35 - 4.1 m/1.1 - 13.5 ft
200	0.35 - 5.8 m/1.1 - 19.1 ft
400	0.35 - 8.2 m/1.1 - 26.9 ft

E
AUTO FLASH

The flash fires automatically in dark places, with backlighting and under fluorescent lighting.

Make sure


The orange lamp in the upper right of the viewfinder lights when the shutter release button is depressed halfway.

Notes:

- When the orange lamp is blinking, the flash is being recharged and the shutter release button won't release: Release your finger from the shutter release button, and wait for several seconds.
- Maximum distance is about 70% when using positive color film.

☆ **Flash Working Range (with color negative film)**

54



E
REDEYE-REDUCING FLASH

Significantly reduces the phenomenon of "red-eye" (when subject's eyes appear red in flash photography).

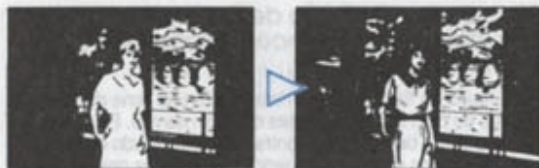
In the flash mode, the camera will fire a series of low-power pre-flashes before the regular flash. This makes the subject's pupils contract, significantly reducing red-eye. Except for the pre-flashes, this mode is the same as the Auto Flash mode.

Redeye-Reduction may not be effective when the subject:

- Is not looking at the flash from the right front.
- Is not watching the pre-flashes.
- Is too far from the camera.
- Does not respond to the pre-flashes due to particular individual characteristics.

IMPORTANT: Be sure to hold the camera still until the shutter releases. It takes approximately one second.

56



58

E OFF (Flash Override)

When you don't want the flash to fire even in the dark or when you want to shoot such subjects as fireworks.

In the Flash-OFF mode, the flash does not fire even in low-light conditions. Use this mode in situations where flash photography is not desired or is prohibited or in twilight or night scenes.

Note: Since a slow shutter speed (down to 2 seconds) is automatically selected in low-light situations when in the Flash-OFF mode, the use of a tripod is recommended to prevent blurred pictures caused by shaking the camera. Closing the lens barrier returns to AUTO.



60

E FILL-IN FLASH (FORCED ACTIVATION)

When you want to fire the flash every shot.

In the F Flash mode, the flash fires regardless of available light. For example, this mode can be used to brighten up a subject's shaded face or under artificial lighting such as back-lit, fluorescent light. Use this mode within the flash working range (p. 54). It may be hard to work under excessively bright light. Closing the lens barrier returns to AUTO.



62

E NIGHT SCENE FLASH

Both people and night scenes can be clearly photographed in this mode.

When taking pictures of people with a night background, this mode produces clear images of both.

Note: Since a slow shutter speed (down to 4 seconds) is automatically selected in low-light situations, use a tripod to prevent blurred pictures caused by camera shake.

Night-Scene mode cannot be used together with Spot mode. Closing the lens barrier returns to AUTO.



E REDEYE-REDUCING NIGHT SCENE FLASH MODE

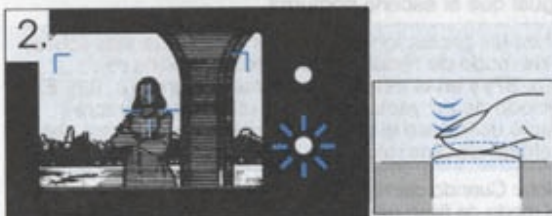
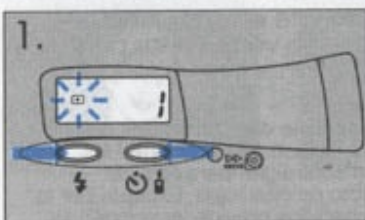
Significantly reduces the "red-eye" phenomenon often seen when people are photographed against a night background.

The camera will fire a series of 10 pre-flashes before the flash fires. This makes the subject's pupils contract, significantly reducing the red-eye. Except for the pre-flashes, this mode is the same as the Night Scene Mode.

Please read the cautions in the Redeye-Reducing Flash Mode (p. 56) and Night Scene Mode (p. 62) items. The Spot Mode cannot be used while the Redeye-Reducing Night Scene Mode is being used.

NOTE: When the lens barrier is closed, the Redeye-Reducing Flash Mode is restored.

64



E SPOT MODE TO FOCUS AND SET THE EXPOSURE FOR A SELECTED AREA.

1. Press the button and flash mode button at the same time.
 is displayed on the LCD panel.
 Press the and the flash mode buttons at the same time or close the lens barrier to cancel the Spot mode.
2. Position the autofocus mark on your subject, and press the shutter release button halfway.

Make sure

The green lamp lights.
 The exposure will be locked in the center of the autofocus mark.

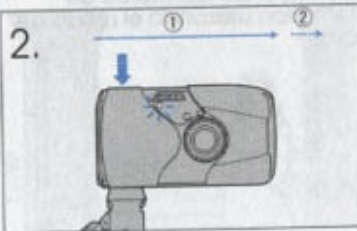
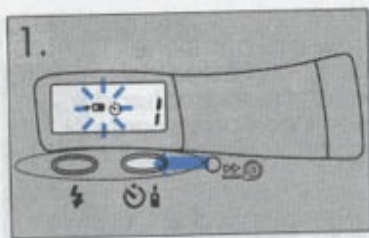
66



3. Reposition your subject in the picture frame while keeping the shutter release button depressed halfway. Then press the shutter release button fully.

Focus and exposure can be adjusted at different points from the autofocus frame using the Spot mode.

68



70

E

SELF TIMER

To Put Yourself in the Picture

1. Press the button. is displayed on the LCD panel.

Make sure

Use a tripod to hold the camera securely.

2. Aim at your subject, and press the shutter release button.

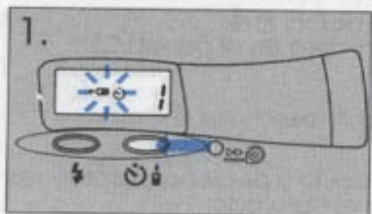
① 10 sec.: Selftimer indicator lights

② 2 sec.: Blinks

The shutter will be released approximately 12 seconds after the shutter release.

Notes:

- The focus and exposure will be locked when the shutter release button is depressed halfway.
- The selftimer is disengaged when the shutter is released.
- To cancel the selftimer after it has been activated, press the button again.



72

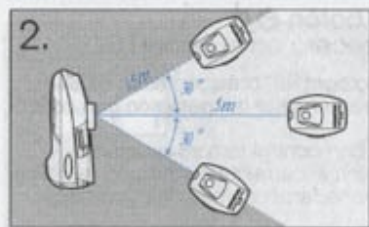
E

REMOTE CONTROL (optional)

The optional RC-200 Remote Control is required in the operation below.

1. Press the button. is displayed on the LCD panel.

After shooting, press the button again to cancel the selftimer/remote control mode. Remote control operation is canceled automatically when not in use for more than 20 minutes.



74

2. Aim the remote control at the camera, and press the button. The shutter will be released after about 3 seconds.

Notes:

- Use the remote control within the range shown at left.
- The camera will focus on the subject directly in front of it.
- The remote control may not work when the subject is backlit. In this case, use the selftimer.
- The remote control may not work when there is inverted fluorescent light near the camera.

E

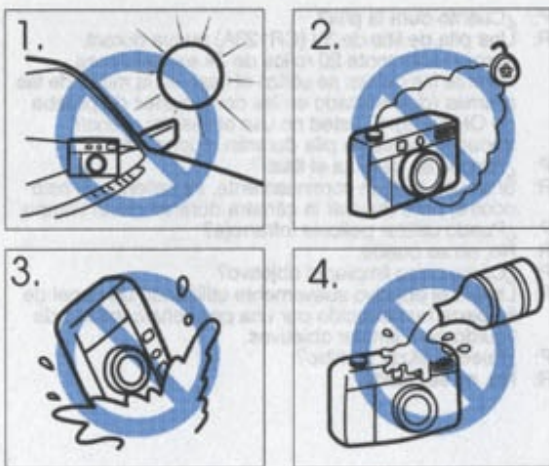
QUESTIONS AND ANSWERS

- Q: How long will the battery last?
 A: A new 3V lithium battery (CR123A) will last for roughly 20 rolls of 24-exposure film on which the flash was used on half of all the shots (determined under Olympus test conditions). If you do not use the flash and zoom very often, the battery will last much longer.
- Q: Why does the flash get hot?
 A: If the flash is used continuously, it may become hot. If this happens, stop using the camera for a while.
- Q: Can I use infrared film?
 A: No, you cannot.
- Q: How should I clean the lens?
 A: Wipe the lens gently with lens cleaning tissue that has been moistened with a small amount of lens cleaning fluid.
- Q: Can I mount a filter or hood?
 A: No, you cannot.

E

CARE AND STORAGE

1. Do not leave camera in any place exposed to excessive heat, humidity, or direct sunlight—for example, in a car or on the beach.
2. Do not expose the camera to formalin or naphthalene.
3. If the camera gets wet, wipe it with a dry towel as soon as possible. The salt in seawater can be especially damaging.
4. Do not use organic solvents, such as alcohol or paint thinner when cleaning the camera.



5. Do not leave the camera on or near a television, refrigerator, or other appliances with a magnetic field.
 6. Do not expose the camera to dust or sand as this could cause serious damage.
 7. Do not shake the camera.
 8. Do not apply excessive force to the lens.
- Please keep the camera in a well-ventilated place.
 - Do not expose the camera to extreme heat (over 40°C/104°F) or to extreme cold (below -10°C/14°F). Low temperatures, even within this range, may sometimes cause deterioration in battery performance, temporarily disabling the camera.
 - Some airport X-ray machines can damage the film in your camera. Try to avoid passing your camera through these machines. Give to the security officer for manual inspection.

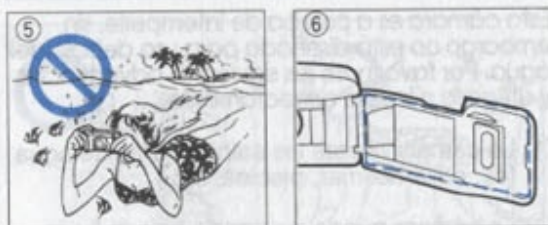
- When transporting the camera from a cold place to a warm place or in the event of a sudden temperature change, put the camera into a plastic bag. This allows the camera's temperature to change slowly. Once the camera has adjusted to the new temperature, you can remove it from the bag and use it.
- Keep your hair, hands, strap etc. away from the autofocus window, lens, AE sensor and flash.
- Avoid leaving the camera unused for long periods of time. This can cause mold to grow on the camera as well as other problems. Try to press the shutter release button and check the operation of camera before use.
- This camera is controlled by a microcomputer. Problems with the microcomputer can affect or stop camera operation. If this happens, remove the batteries, then reload them and try the camera again. Strong electrical fields can also interfere with the operation of this camera so try to avoid places or objects that generate such fields.
- This camera is not suitable for professional use or for use under severe conditions.



E CARING FOR YOUR WEATHERPROOF CAMERA

This camera is weatherproof; however, it is not designed for underwater use. Please note the following warnings and use the camera correctly.

- ① The camera can withstand splashing water (e.g., seaside, swimming pool side, etc.)
- ② The camera can be used in rain.
- ③ And in snow.
- ④ Do not wash the camera.



- ⑤ Do not submerge the camera or attempt to take pictures underwater.
- ⑥ Rubber gaskets are located inside the rear of the camera. Check the gaskets for wear and carefully remove any sand and dust to maintain a weatherproof seal.

- If the camera has been splashed by water, etc., clean the camera with a dry cloth as soon as possible.
- Do not touch the rubber gasket on the battery compartment cover or the rubber gasket on the camera back with excessive force. Do not remove the gaskets.
- Gaskets should be replaced after approximately three years, although they may require replacement earlier than that depending on use and wear.
- If the gaskets are damaged or need replacement, contact your nearest Olympus service center.

E**BATTERY HANDLING****NOTES**

- When the camera is not used for an extended period of time, remove the battery.
- Keep spare batteries on hand when going on a long trip or to a cold area.
- Sweat, oil, and so on can prevent a battery's terminals from making electrical contact. To avoid this, wipe both terminals before loading battery.

WARNINGS

- NEVER TRY TO DISASSEMBLE, RECHARGE, OR SHORT CIRCUIT BATTERY. NEVER EXPOSE BATTERY TO EXCESSIVE HEAT OR OPEN FLAMES.
- KEEP THE BATTERY OUT OF THE REACH OF CHILDREN. IF A CHILD SWALLOWS A BATTERY, CONTACT A DOCTOR IMMEDIATELY.
- USE ONE 3V LITHIUM BATTERY (DL 123A OR CR123A). NEVER TRY TO DISASSEMBLE OR MODIFY ANY BATTERY OR BATTERY PACK FOR USE IN THIS CAMERA.

E**REMOTE CONTROL (optional) HANDLING**

- Keep the remote control out of the reach of children. If a child swallows the remote control, contact a physician immediately.
- Never try to disassemble the remote control. Never expose the remote control to excessive heat or open flame.

OPERATING PROBLEMS

The camera does not work.

- ① The lens barrier is not opened.
→ Open the lens barrier completely. (p. 38)
- ② The alignment of the battery terminals is not correct.
→ Reload the battery correctly. (p. 24)
- ③ The battery is exhausted.
→ Replace the battery with new one. (p. 26)
- ④ The battery is temporarily unable to function because of cold.
→ Keep the camera warm while using it.
- ⑤ The loaded film has been rewound.
→ Remove the film. (p. 48)
- ⑥ The film is incorrectly loaded.
→ Reload the film. (p. 32)

The LCD display goes off suddenly.

- ① If you don't use the camera, the LCD goes off after four and half minutes.
→ Close the lens barrier and open it again to turn the LCD back on. In addition, the power is turned OFF automatically after 4 hours.
When the camera is not in use, try to keep the lens barrier closed.

The shutter release button doesn't release when the remote control's shutter release button is pressed.

- ① The remote control hasn't been used in the last 20 minutes since the Selftimer/Remote Control mode was engaged, causing the LCD panel to turn off.
→ Close the lens barrier and reopen it. The LCD will light. Then press the Selftimer/Remote button again.

The green lamp blinks, and the shutter release button will not release.

- ① The camera is closer than 0.35 m (1.1ft) to the subject.
→ Move the camera back to distance more than 0.35 m (1.1ft) from the subject. (p. 44)

The orange lamp blinks, and the shutter release button will not release.

- ① The flash has not been recharged yet.
→ Remove your finger from the shutter release button and wait several seconds until the flash is recharged before shooting. (p. 54)

The flash does not fire, even in the dark.

- ① The flash mode is set to S .
→ Set it to a mode other than S . (p. 52)
- ② High speed film is used.
→ Set the flash mode to F . (p. 52)

PROBLEMS WITH PRINTED PICTURES

The picture is out of focus.

- ① The camera moved when the shutter release button was pressed.
→ Hold the camera correctly and press the shutter release button gently. (p. 28)
- ② The subject was not within the viewfinder's autofocus mark.
→ Position the subject in the center of the scene. (p. 40)
- ③ The lens and autofocus windows were dirty.
→ Clean the lens and autofocus windows.

- ④ The autofocus window was blocked, such as by a finger.
→ Hold the camera correctly, keeping your fingers clear of the autofocus windows. (p. 28)
- ⑤ The subject was closer than the minimum working distance to the lens (0.35 m/1.1 ft).
→ Shoot from more than 0.35 m/1.1 ft away from the subject. (p. 44)
- ⑥ When using the selftimer, the shutter release button was pressed while standing right in front of the camera.
→ Do not stand in front of the camera. Press the shutter release button while looking through the viewfinder. (p. 70)

- ⑦ The autofocus didn't work correctly. There are some subjects that are difficult for the autofocus to lock on. These include: glossy or reflective surfaces, black objects, subjects behind glass or wire mesh, flames and smoke, excessively bright light within the picture area.
→ Focus on an object at the same distance as the desired subject in the Spot mode. Then aim at the desired subject and release the shutter release button. (p. 68)

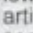
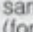
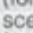
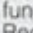

The picture is too dark.

- ① The flash was blocked, (e.g. by a finger).
→ Hold the camera correctly, keeping your fingers clear of the flash. (p. 28)
- ② The subject was out of the working range of the flash.
→ Shoot within the flash working range. (p. 56)
- ③ The flash mode was set to OFF.
→ Check the flash mode before shooting. (p. 52)

Type: Full automatic 35 mm autofocus lens-shutter camera.
Film format: 35 mm standard DX-coded film (24 x 36 mm)
Lens: Olympus lens 35 mm F2.8, 4 elements in 4 groups.
Shutter: Programmed electronic shutter.
Viewfinder: Real image viewfinder (with autofocus mark, close-up correction marks, autofocus indicator and flash indicator).
Focusing: Active-type multi-beam autofocus system. Focus lock possible. Focusing range: 0.35 m / 1.1 ft. ~ ∞ (infinity).
Exposure control: Programmed automatic exposure control, 2-zone light metering, switchable to spot metering. Auto exposure range: EV1.0 to EV 17 (F2.8, 4sec.-F11 1/1000sec.)

Exposure counter: Progressive type with automatic reset, displayed on LCD panel.
Self-timer: Electronic selftimer 12-sec. delay.
Remote control (optional): Infrared remote control unit with 3-sec. delay.
Film speed range: Automatic setting with DX-coded film with ISO 50, 100, 200, 400, 800, 1600, 3200. For non DX-coded film and film with less than ISO 50, film speed is set to ISO 100.
Film loading: Automatic loading. (Automatically advances to first frame when camera back is closed.)
Film advance: Automatic film winding.
Film rewind: Automatic film rewind (automatic rewind activation at end of film, automatic rewind stop). Rewind possible at any point with mid-roll rewind button.

Flash: Built-in flash. Recycling time: Approx. 0.2 ~ 3.5 sec. (at normal temperature with new battery).
Flash working range: 0.35 ~ 4.1 m with ISO 100 color negative film; 0.35 ~ 8.2 m with ISO 400 color negative film.

Flash modes: Auto (Automatic flash activation in lowlight, backlight and fluorescent or other artificial lighting),  Redeye-Reducing (otherwise same as in Auto),  Flash Off (no flash),  Fill-In (forced activation),  Night Scene (for night scenes with slowest shutter speed of 4 sec. other functions operate the same as in Auto),  Redeye-Reducing Night Scene (otherwise same as in Night Scene).

Battery check: Displayed on LCD panel.

Weatherproof: IEC Standard publication 529.

Classification of degrees of protection provided by enclosures. Degree of protection indicated by the second characteristics numeral 4.

•Short description: Protected against splashing water.
•Definition: Water splashed against the enclosure from any direction shall have no harmful effect.

•Test for second numeral 4: The equipment is splashed from all practical directions.

The water pressure is adjusted to give a delivery rate of 10 lit./in. The test duration shall be 1 min. per m² of calculated surface area of the enclosure with a minimum duration of 5 min.

Power source: 3 V lithium battery (DL123A/CR123A)
Dimensions: 108 (W) x 59 (H) x 37 (D) mm / 4.3 (W) x 2.3 (H) x 1.5 (D) in (without protrusions).

Weight: 135 g / 4.7 oz (without battery)

OLYMPUS

OLYMPUS OPTICAL CO., LTD.

San-Ei Building, 22-2, Nishi Shinjuku 1-chome, Shinjuku-ku, Tokyo, Japan. Tel. 03-3340-2211

OLYMPUS AMERICA INC.

Two Corporate Center Drive, Melville, NY 11747-3157, U.S.A. Tel. 516-844-5000/800-622-6372

OLYMPUS OPTICAL CO.(EUROPA) GMBH.

(Premises/Goods delivery) Wendenstrasse 14-16, 20097 Hamburg, Germany. Tel. 040-237730

(Letters) Postfach 10 49 08, 20034 Hamburg, Germany.

OLYMPUS OPTICAL CO.(U.K.) LTD.

2-8 Honduras Street, London EC1Y0TX, United Kingdom. Tel. 0171-253-2772